



**CONVENIO SENA-ARTESANIAS DE COLOMBIA S.A.  
1996.**

**FOTOGRAFIAS**

**TEJEDURIA EN HILAZA DE ALGODON. MUNICIPIO DE SAN JACINTO. BOLIVAR.**

**PATRICIA VALENZUELA O.**

**Bogotá 1996**



## MATERIAL FOTOGRAFICO

### Lista de fotografías

1. Artesana haciendo el enrollado para la guarnición de una hamaca.
2. “ “ “ “ “ “ “ “ “ “
3. “ “ “ “ “ “ “ “ “ “
4. “ “ “ “ “ “ “ “ “ “
5. Artesana urdiendo para elaborar el mantel, (Oliva).
6. “ “ “ “ una divisoria, (Rocío).
7. Acercamiento del urdido para tejer la manta.
8. Urdido para individuales.
9. Artesana alistando la trama.
10. Detalle del proceso anterior, (foto No 8).
11. Detalle del tejido labrado para el mantel.
12. Detalle de una divisoria.
13. Detalle de una artesana haciendo el labrado de un individual.
14. Artesana tejiendo individual, Rosa (foto No 13).
15. “ “ “ “ (foto No 13 y 14).
16. Detalle de un tejido, que las artesanas tenían en la Cooperativa.



1

2





3



4



5

6





7



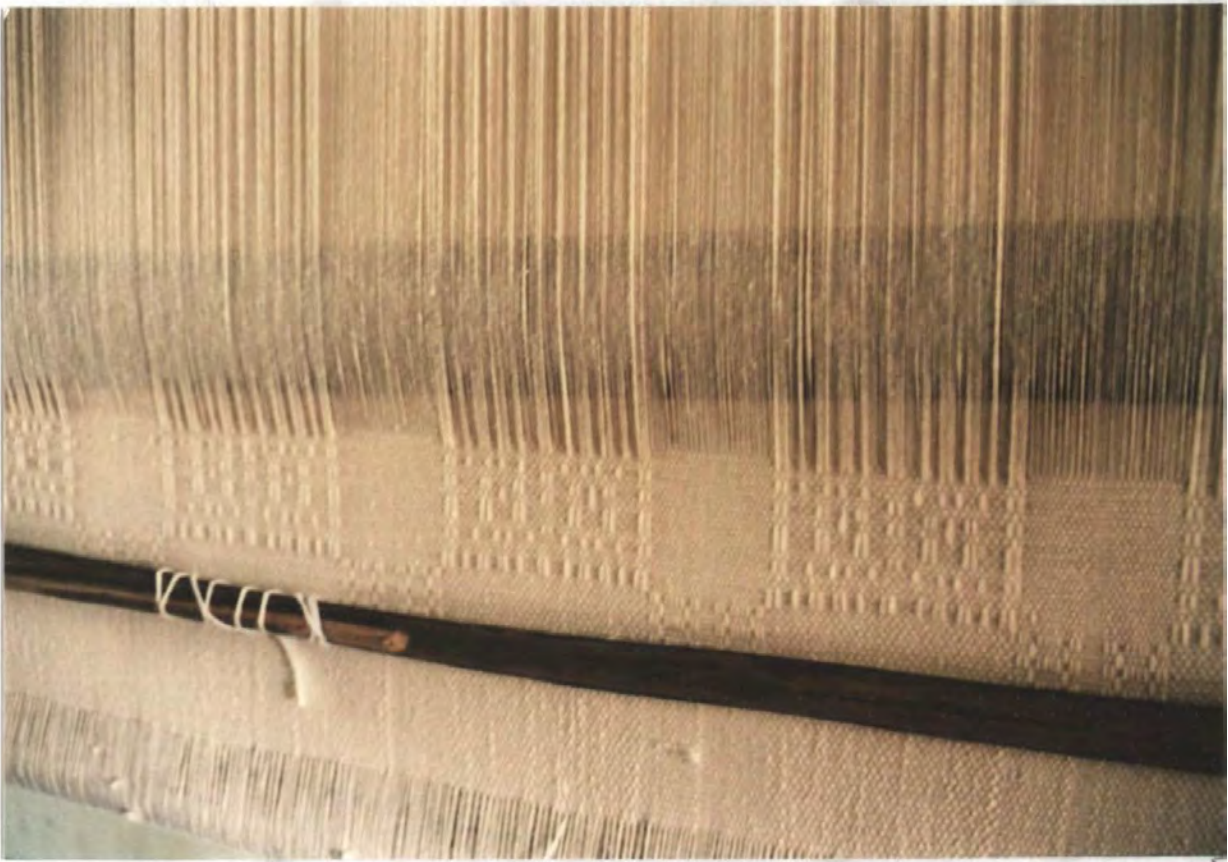
8



9

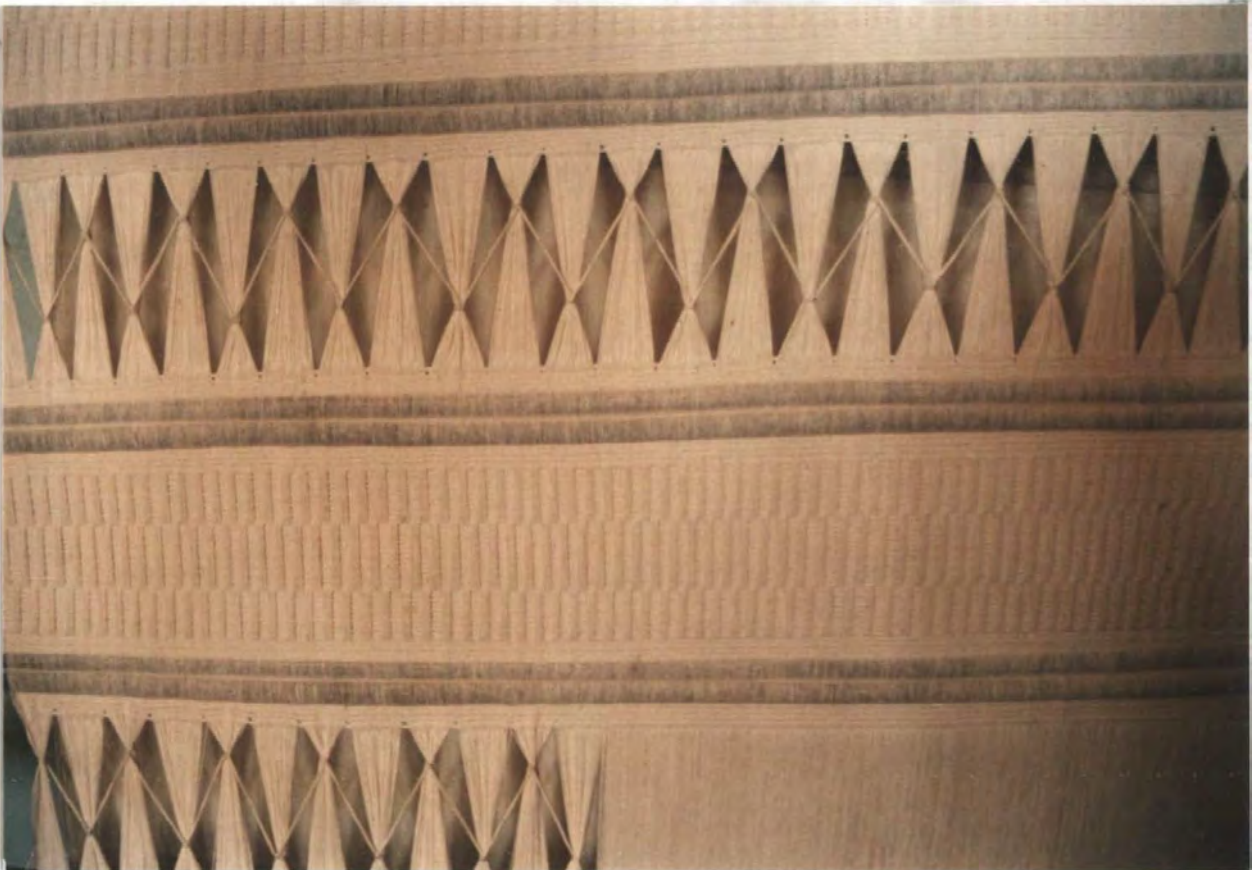
10





11

12







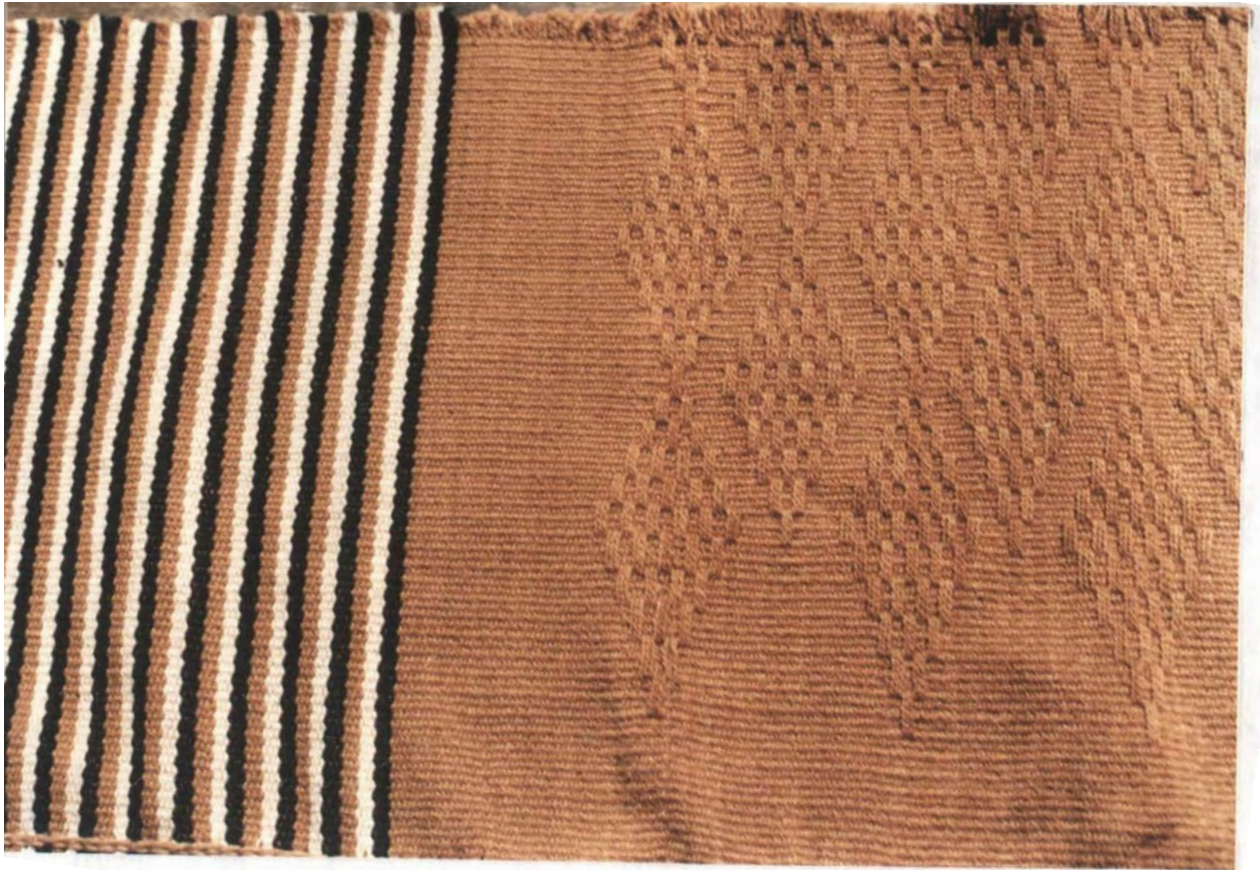
13



14

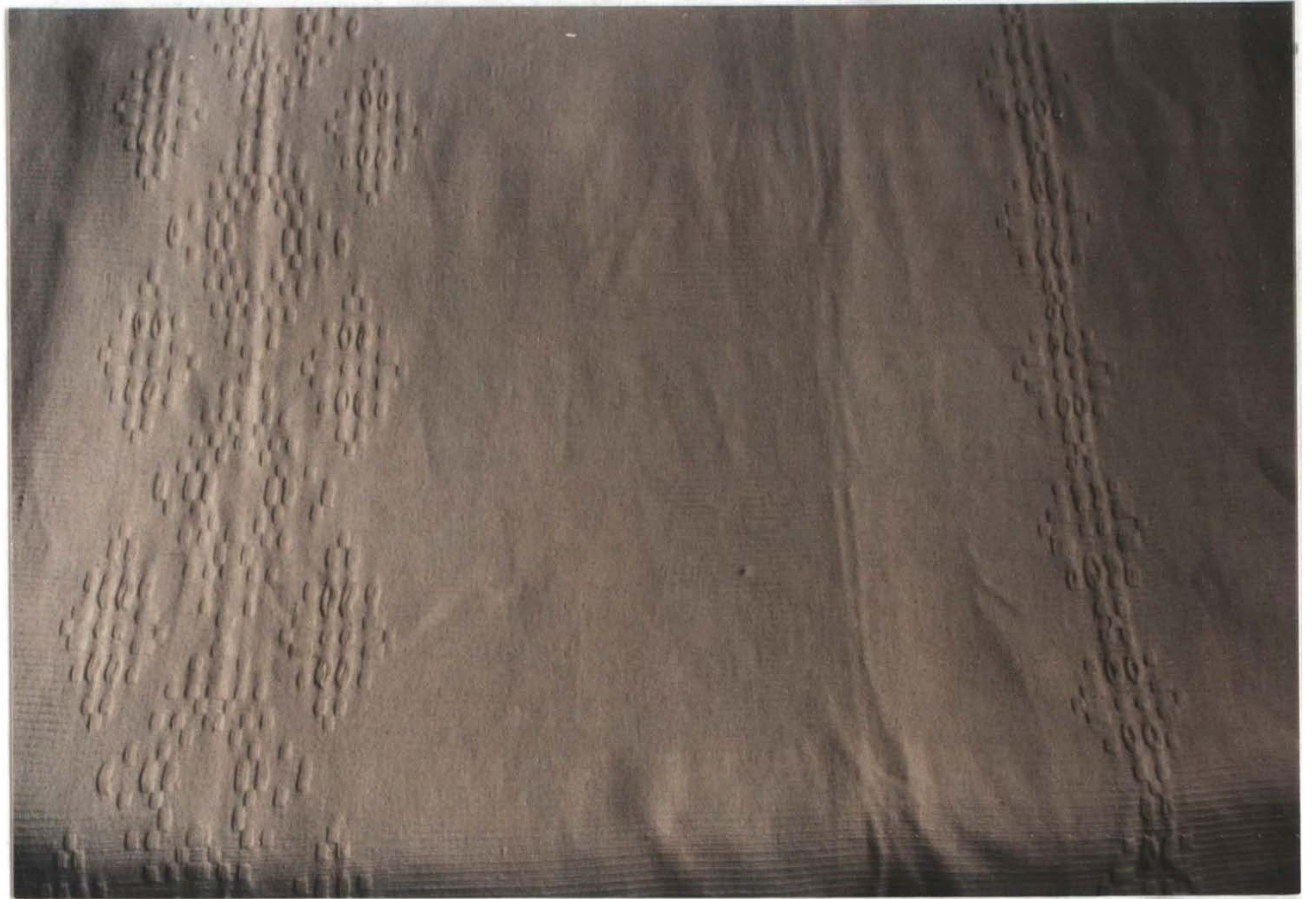


15



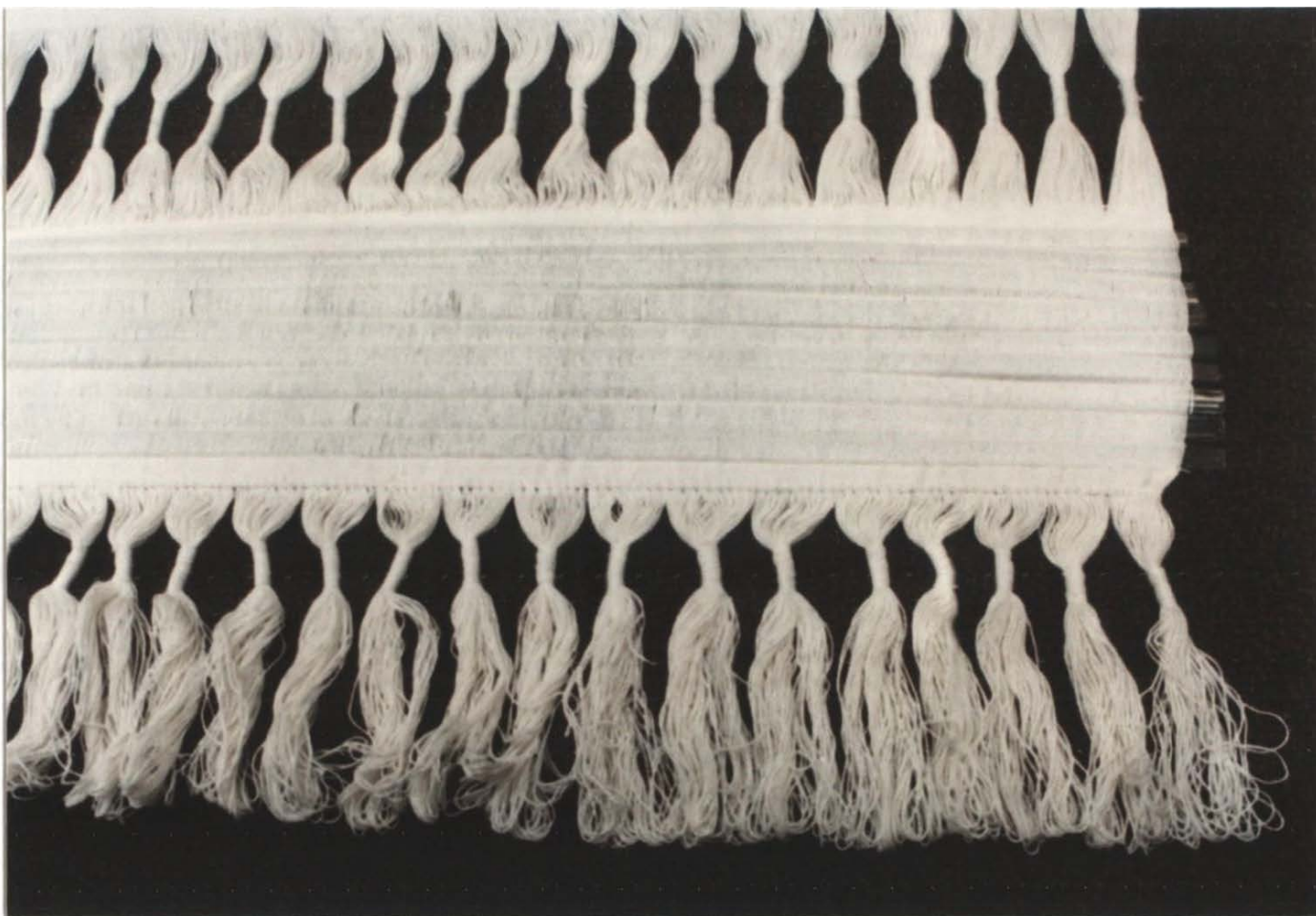
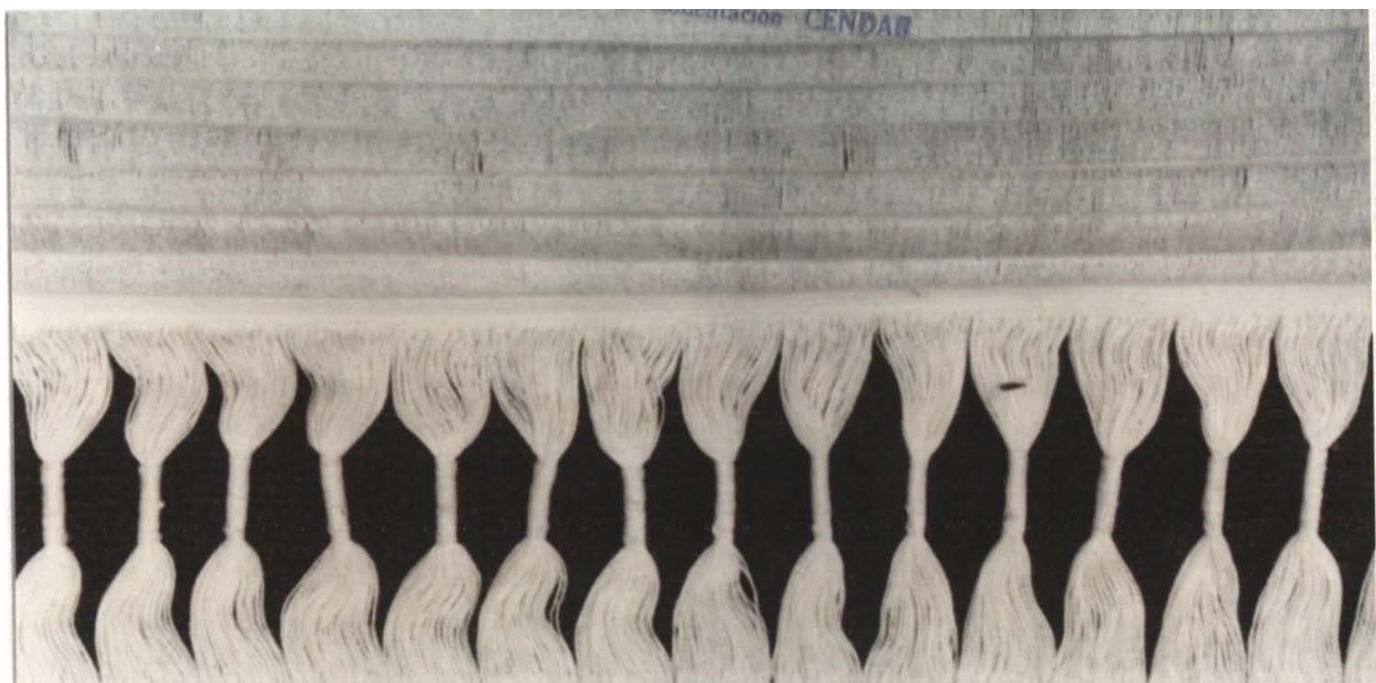
16

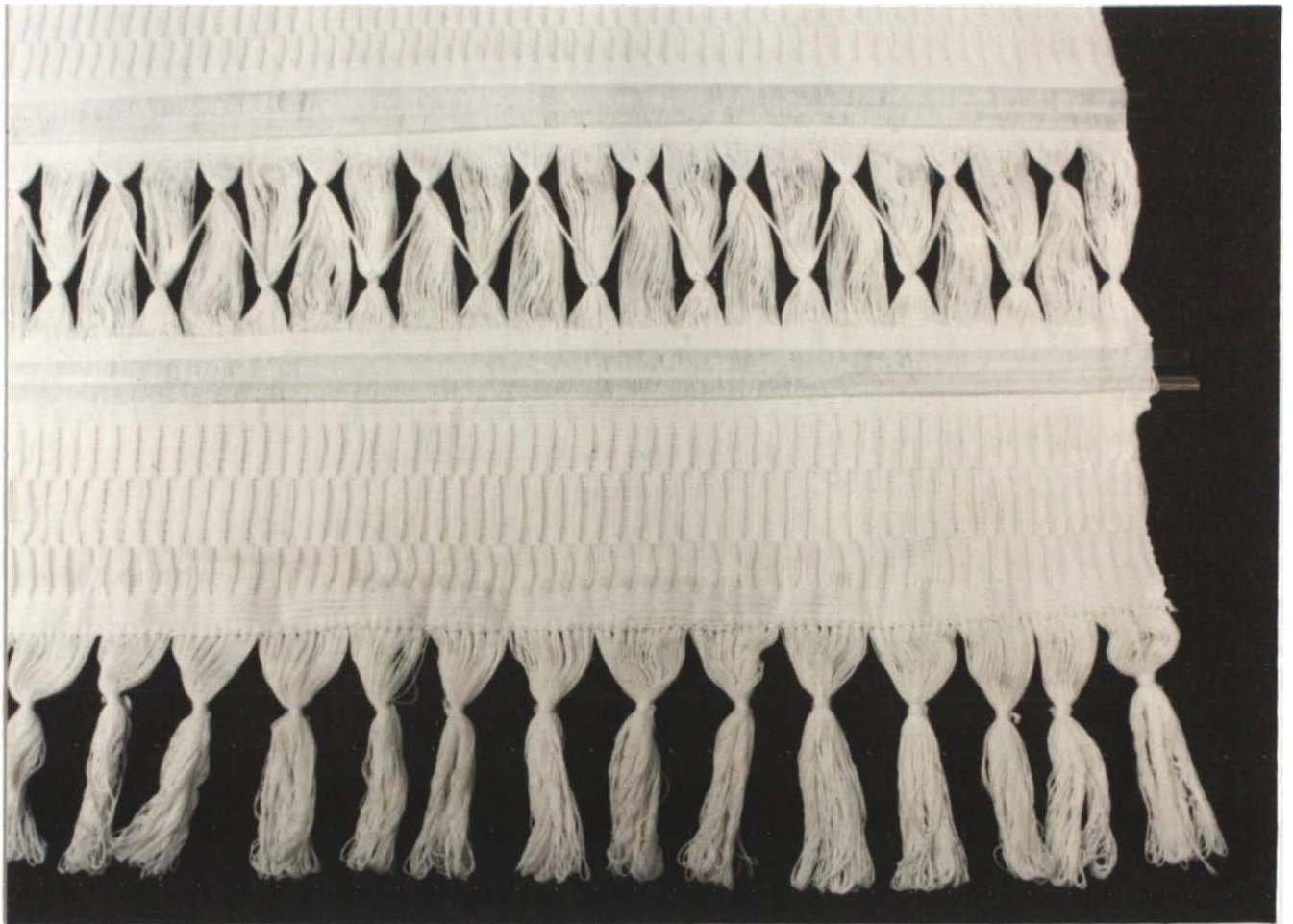
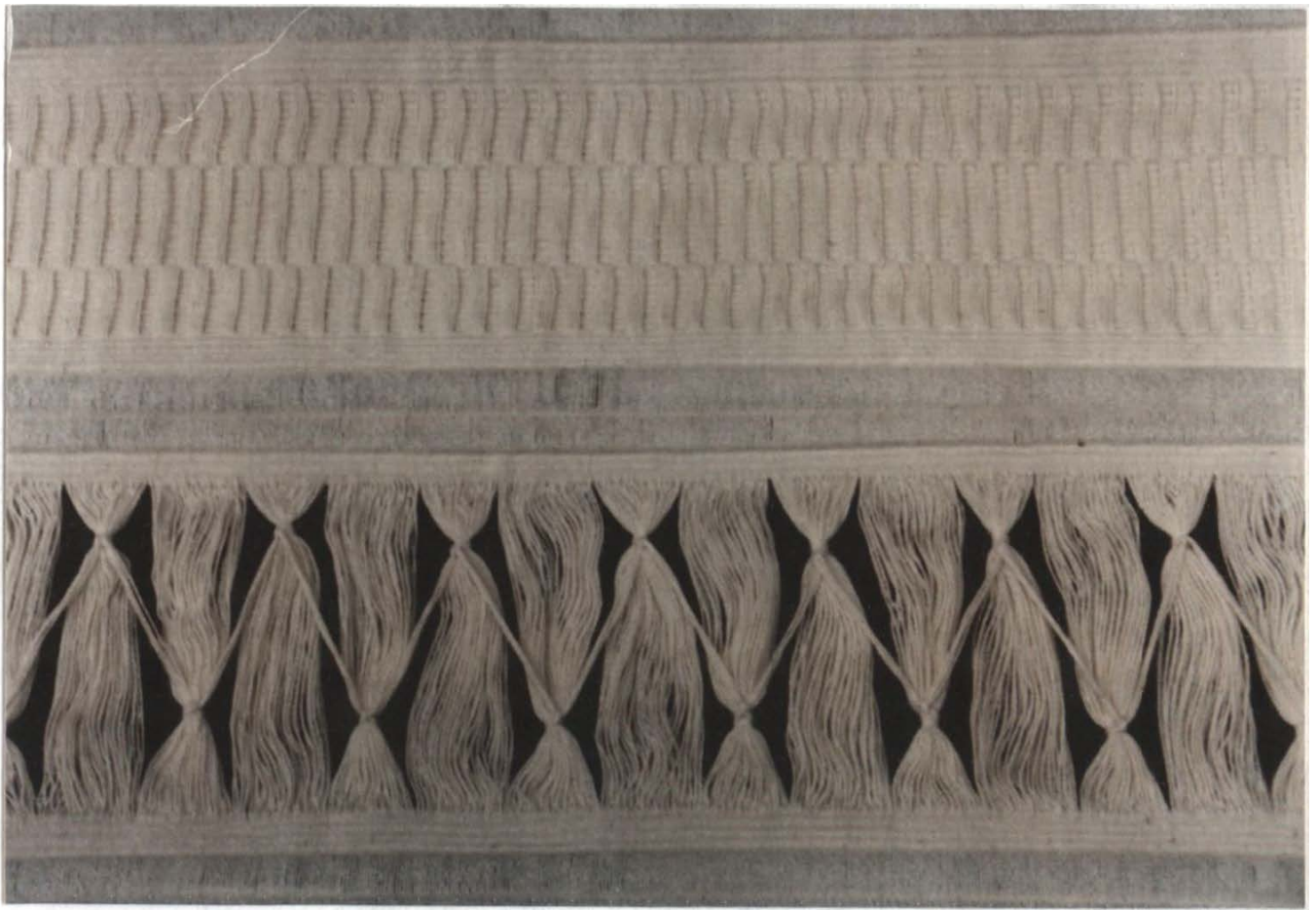




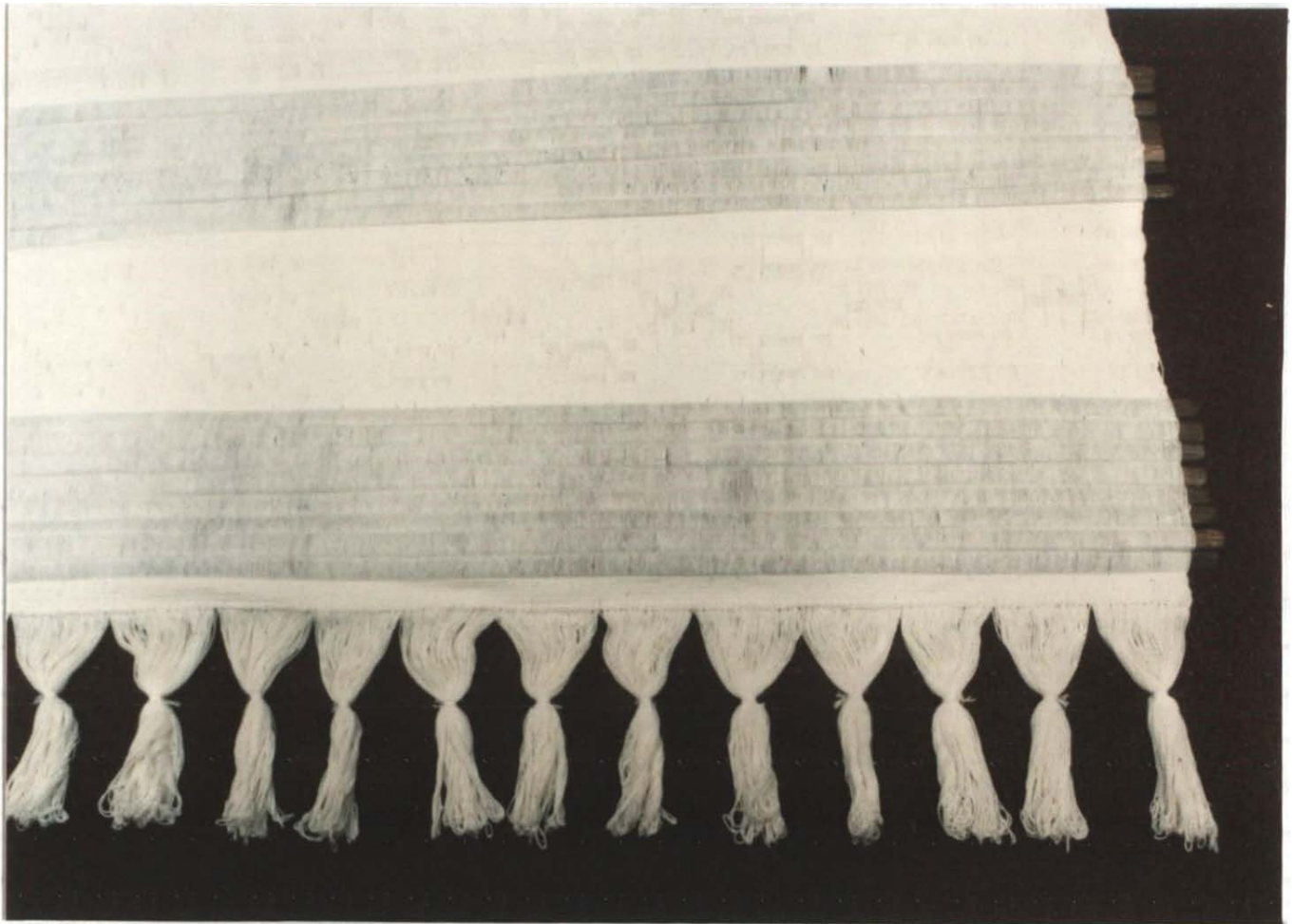
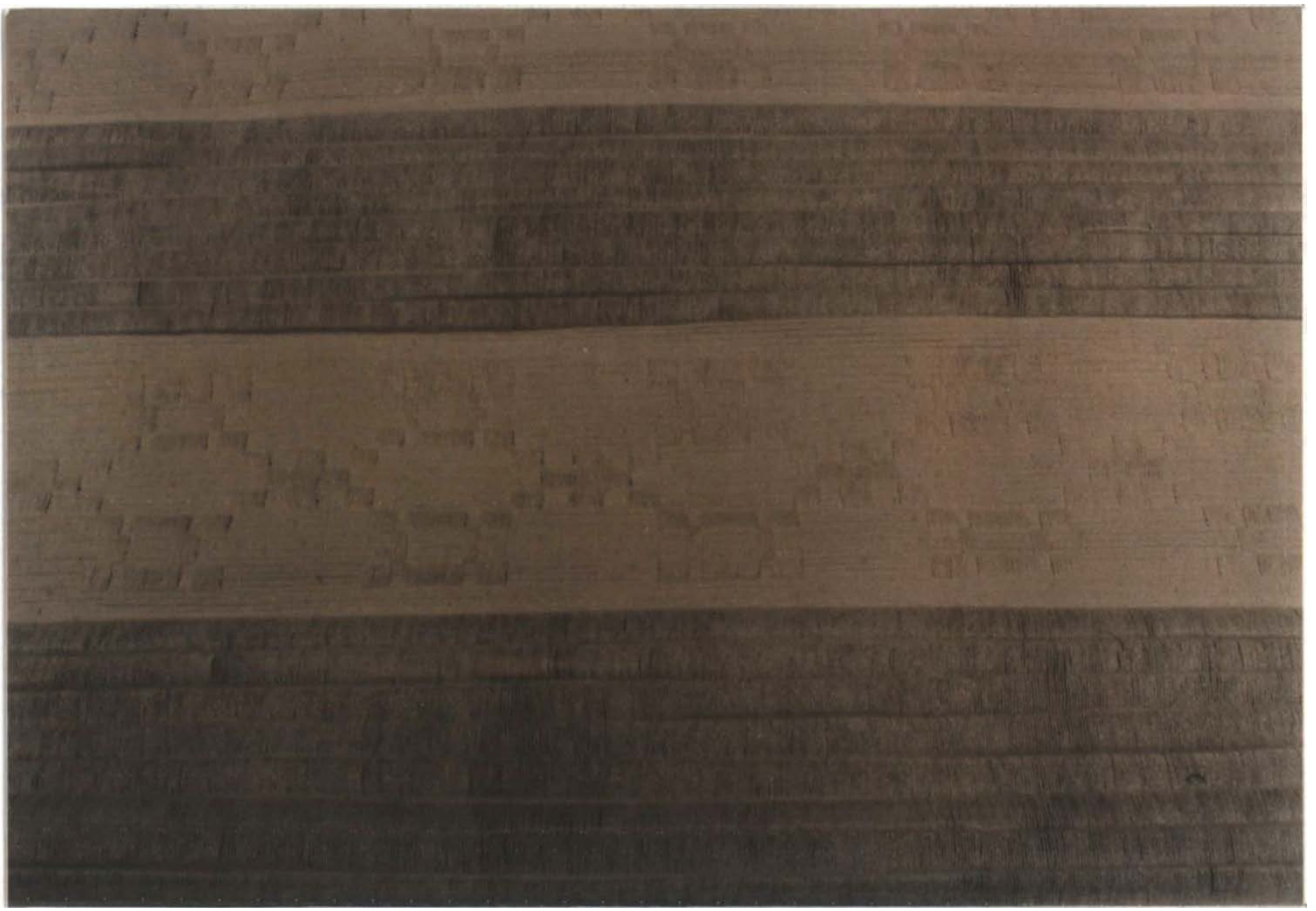




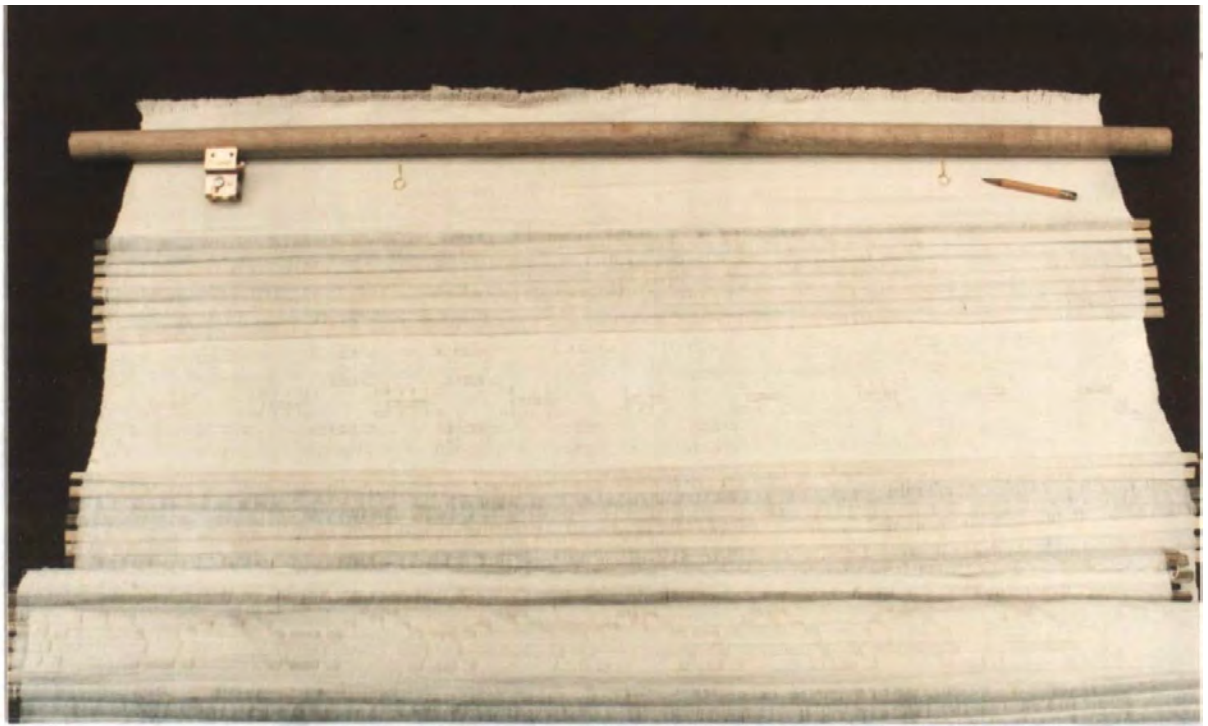




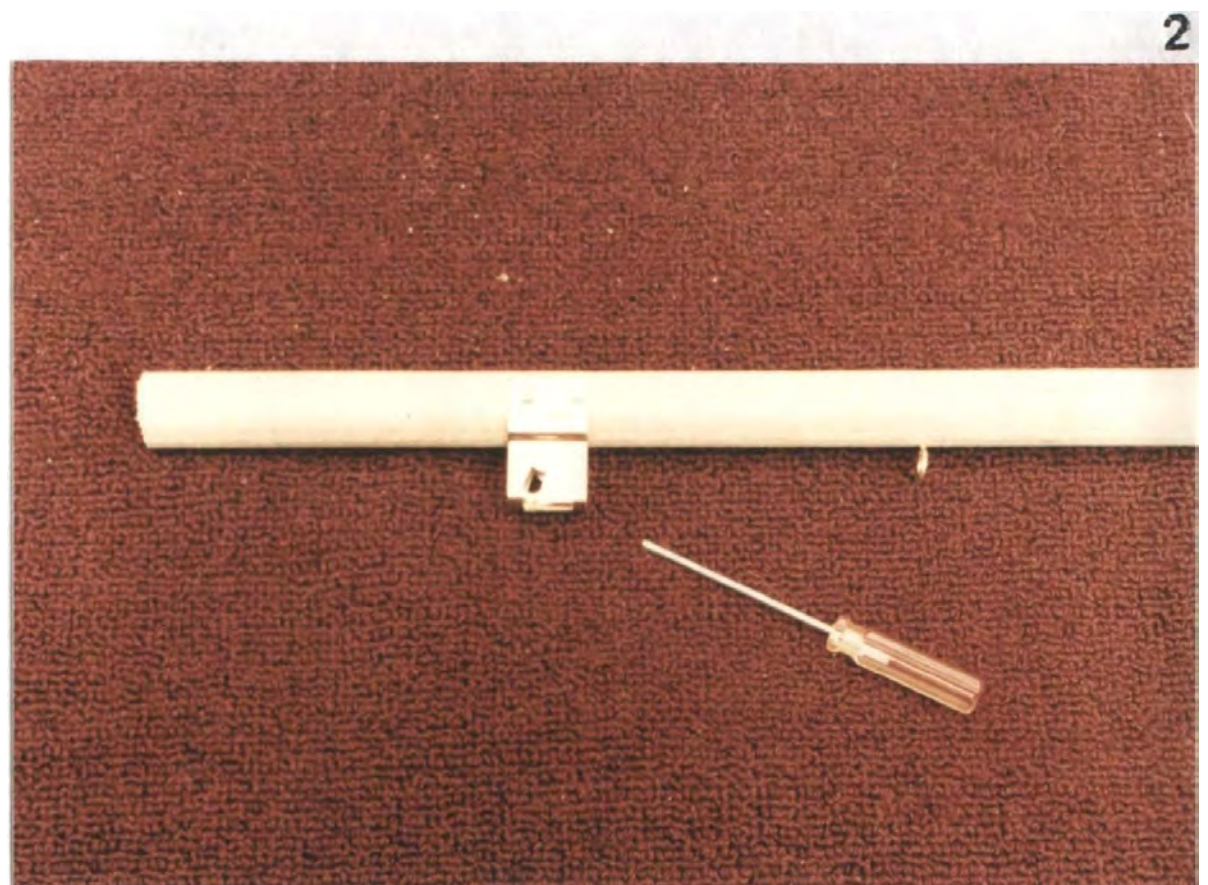








1

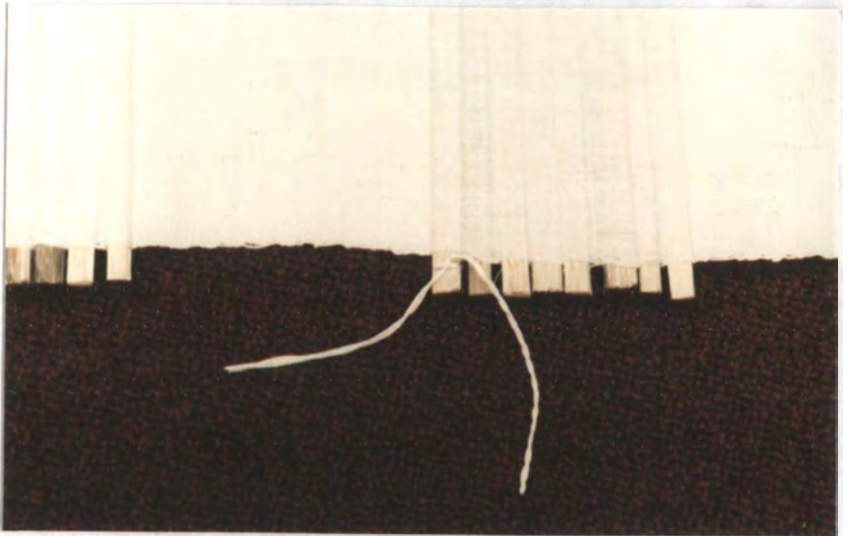


2

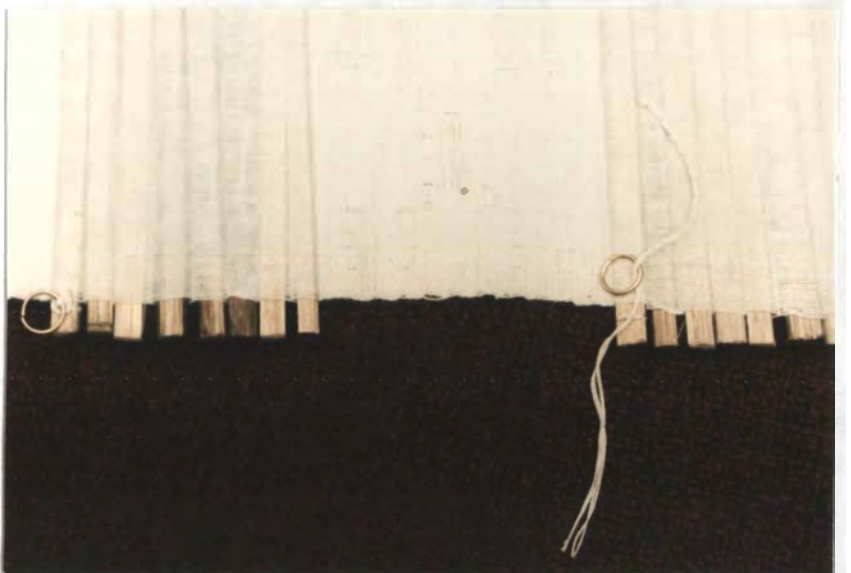
3

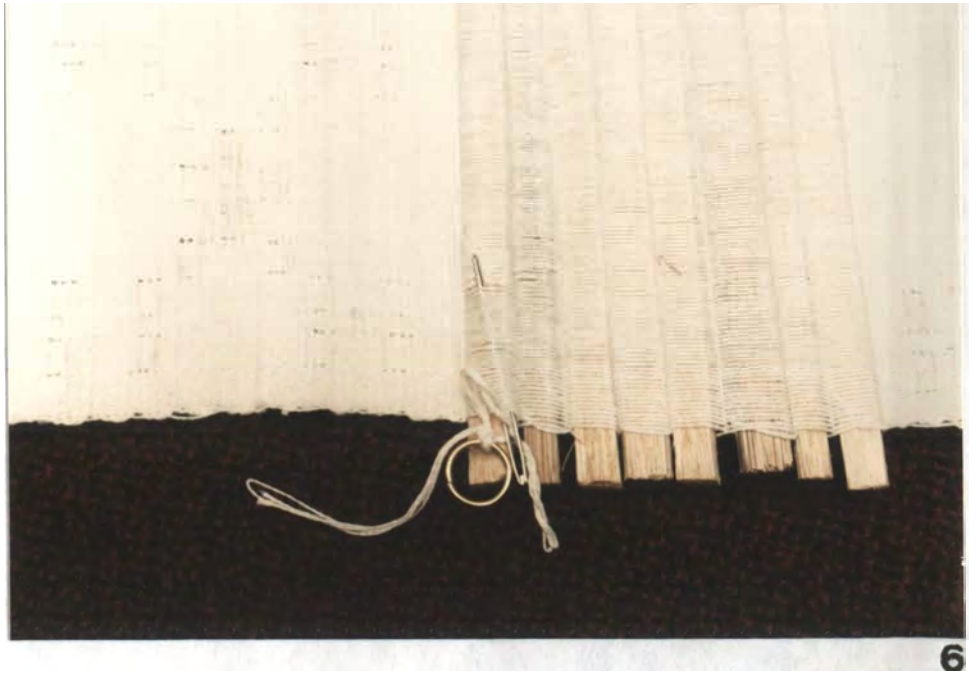


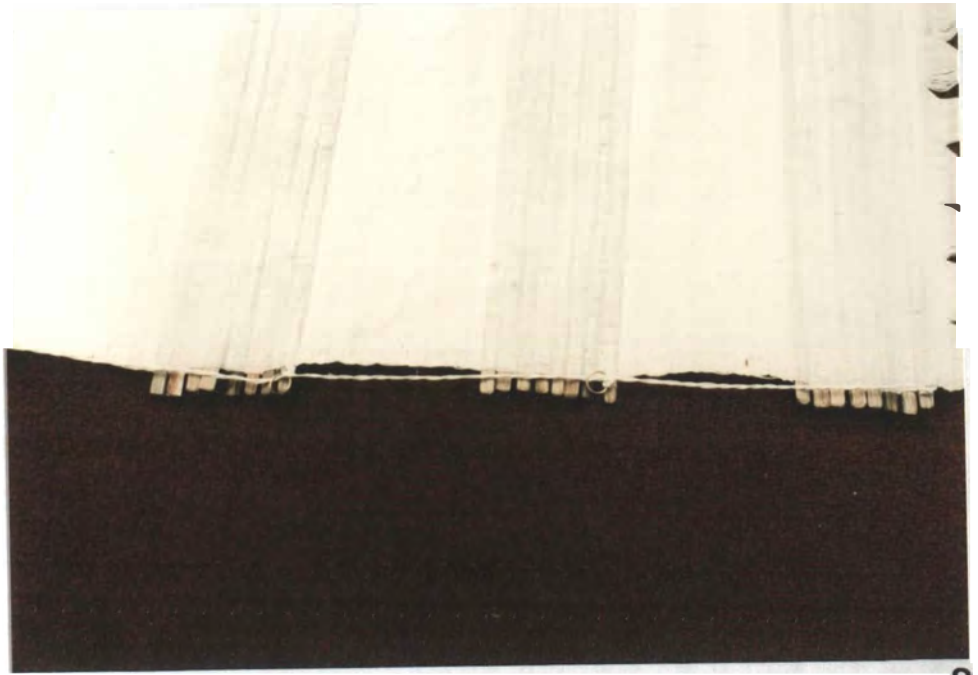
4



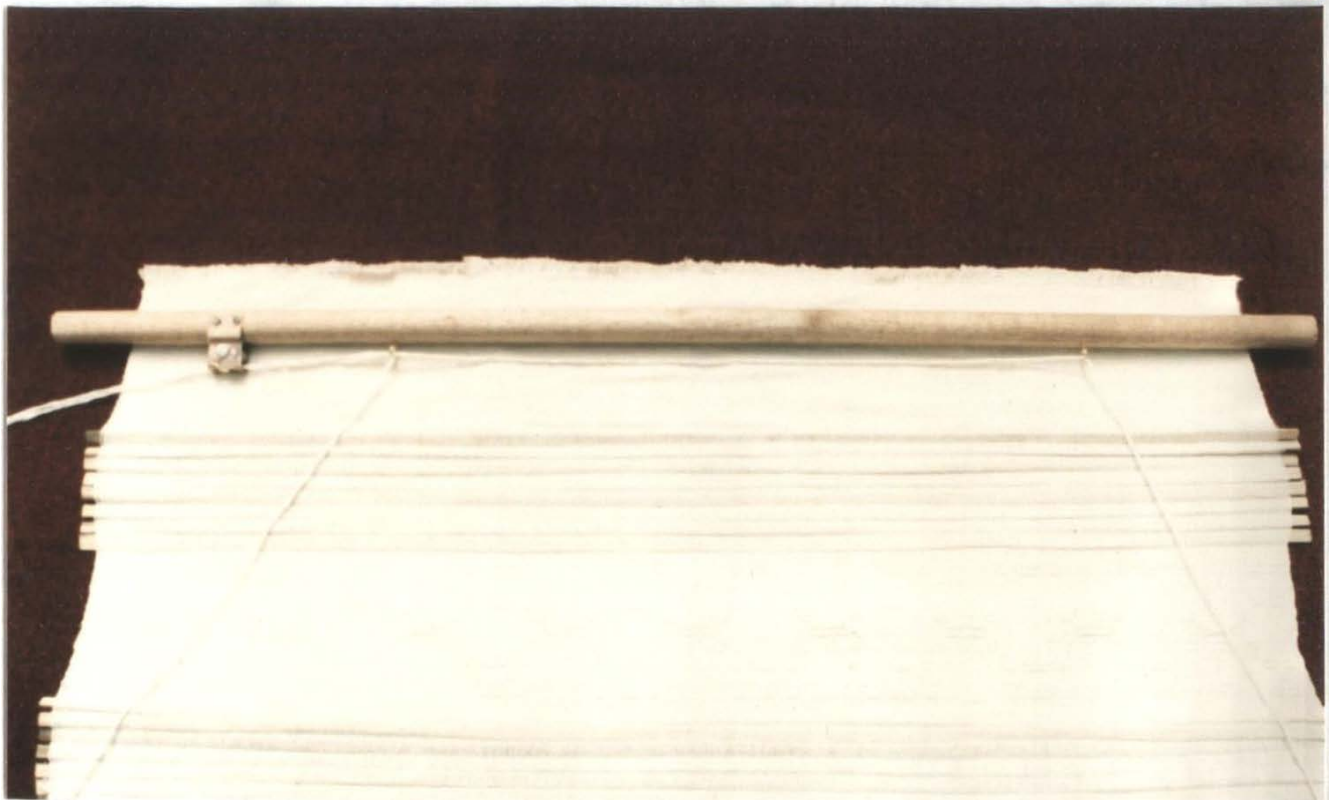
5



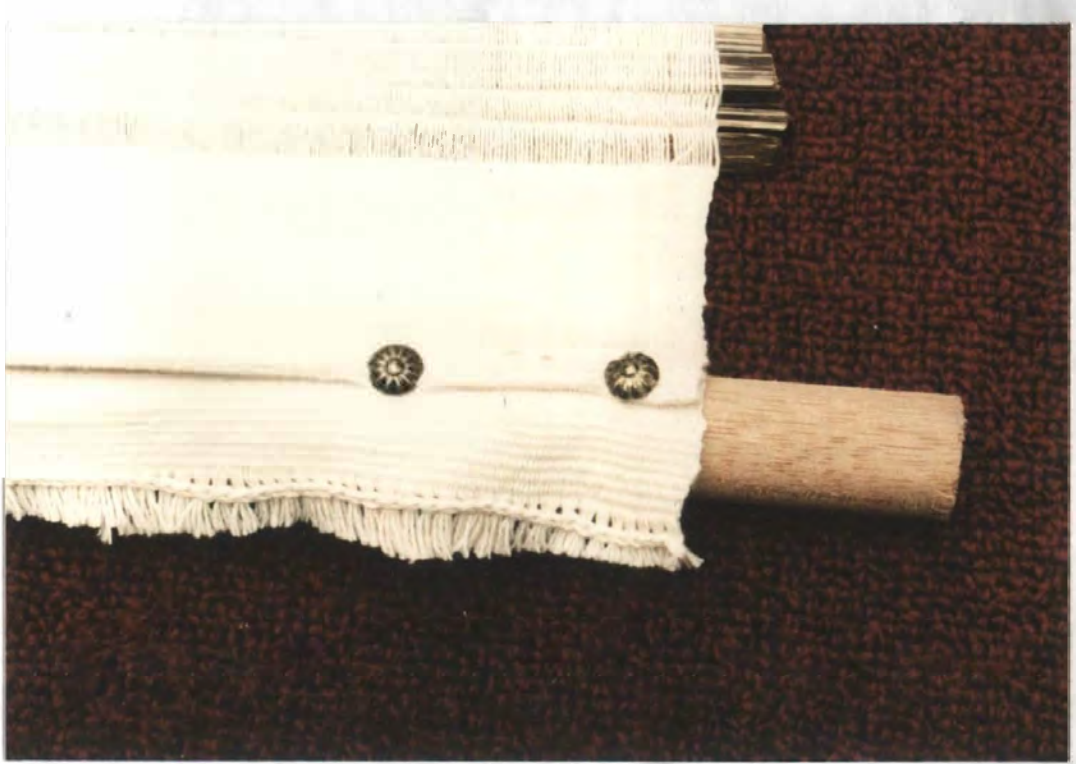




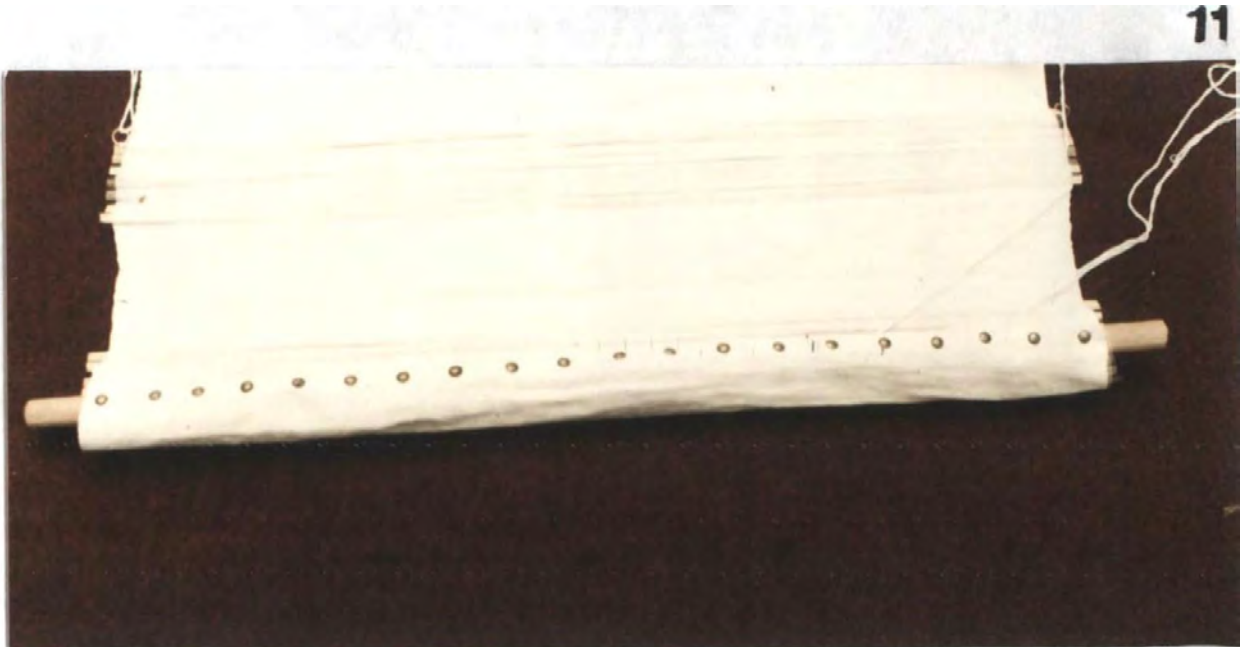
8



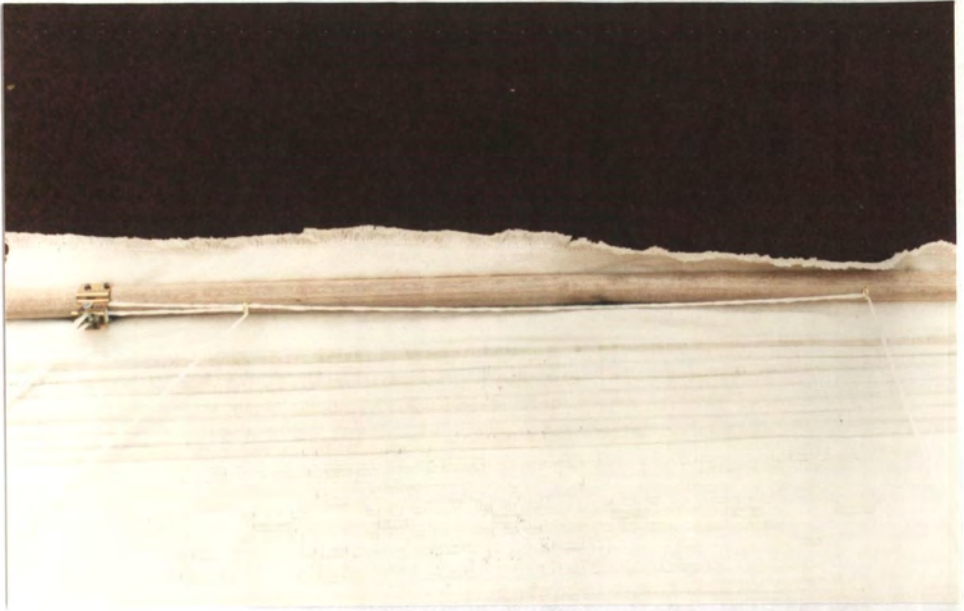
9



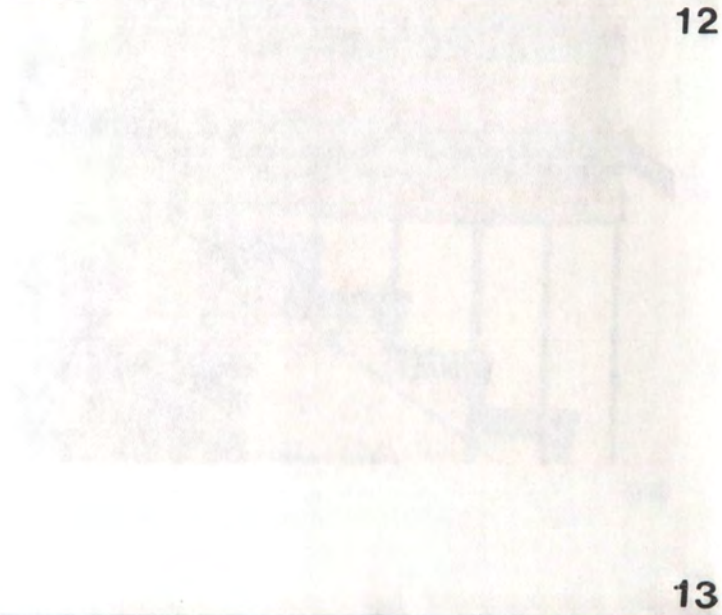
10



11



12



13









15

16

